

EMSI



1187 Alturas Drive
Moscow, Idaho 83843
2088823567

Program Report



Economic Modeling Specialists, Inc. www.economicmodeling.com

EMSI

Region Info

Region: San Francisco larger MSA

County Areas: Alameda, California (6001), Contra Costa, California (6013), Marin, California (6041), San Francisco, California (6075), San Mateo, California (6081), Santa Clara, California (6085)

Executive Summary

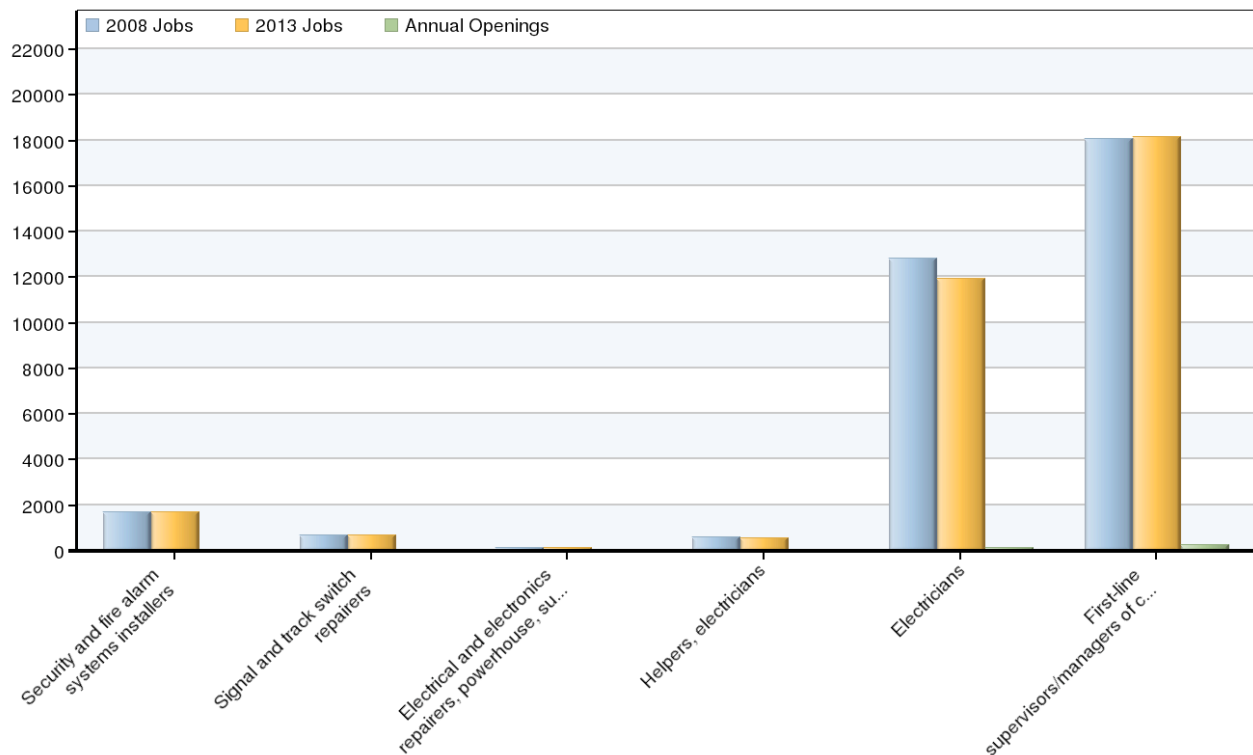
Program
Electrical (TOP 0952.20)

Program Occupations
First-line supervisors/managers of construction trades and extraction workers (SOC 47-1011)
Electricians (SOC 47-2111)
Helpers, electricians (SOC 47-3013)
Electrical and electronics repairers, powerhouse, substation, and relay (SOC 49-2095)
Security and fire alarm systems installers (SOC 49-2098)
Signal and track switch repairers (SOC 49-9097)

Summary	
2008 Occupational Jobs	33,956
2013 Occupational Jobs	33,160
Total Change	-796
Total % Change	-2%
2009 Median Hourly Earnings/Worker	\$32.72
Annual Openings	427
Total Replacement Jobs	2,929

Source: EMSI Complete Employment - Spring 2009

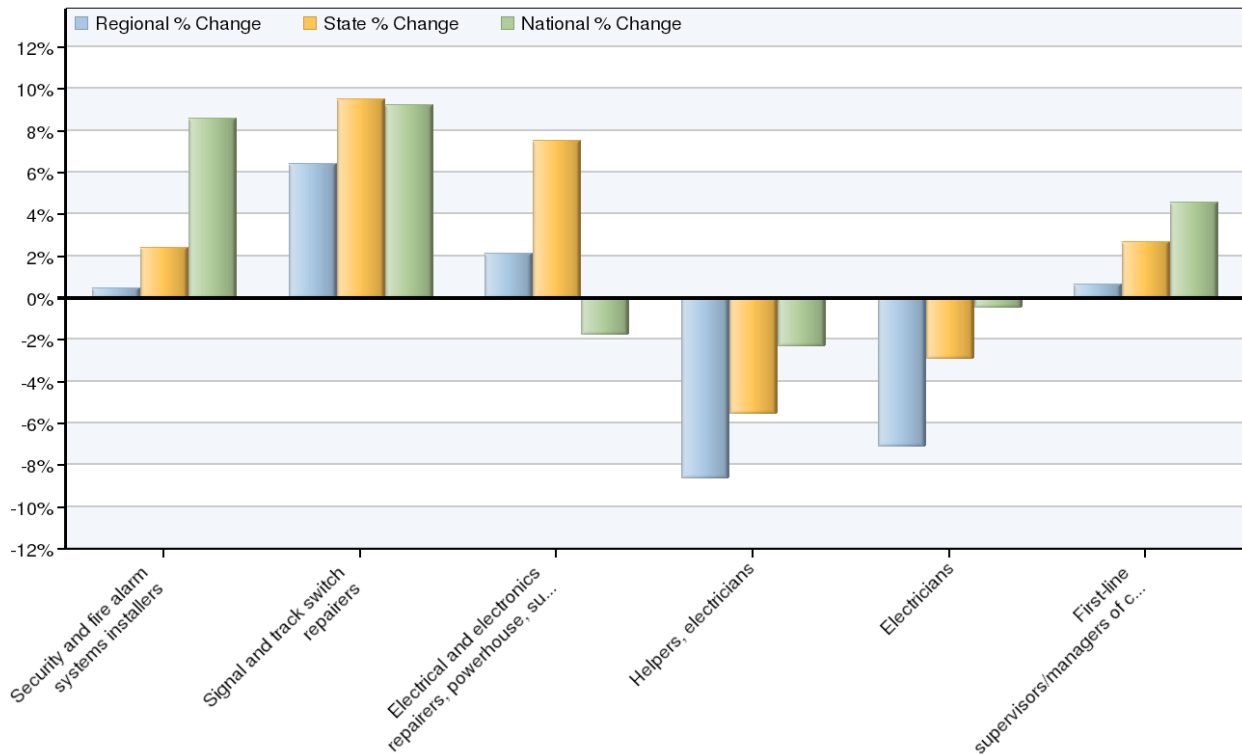
Occupational Breakdown



SOC Code	Description	2008 Jobs	2013 Jobs	Annual Openings	Replacement Jobs	Hourly Earnings	Education Level
49-2098	Security and fire alarm systems installers	1,680	1,688	23	106	\$19.92	Postsecondary vocational award
49-9097	Signal and track switch repairers	656	698	16	36	\$14.12	Moderate-term on-the-job training
49-2095	Electrical and electronics repairers, powerhouse, substation, and relay	140	143	6	28	\$40.19	Postsecondary vocational award
47-3013	Helpers, electricians	603	551	3	69	\$18.36	Short-term on-the-job training
47-2111	Electricians	12,825	11,911	118	1,505	\$33.01	Long-term on-the-job training
47-1011	First-line supervisors/managers of construction trades and extraction workers	18,052	18,169	261	1,186	\$34.80	Work experience in a related field
	Total	33,956	33,160	427	2,929	\$32.72	

Source: EMSI Complete Employment - Spring 2009

Occupational Change



SOC Code	Description	Regional Change	Regional % Change	State % Change	National % Change
49-2098	Security and fire alarm systems installers	8	0%	2%	9%
49-9097	Signal and track switch repairers	42	6%	9%	9%
49-2095	Electrical and electronics repairers, powerhouse, substation, and relay	3	2%	8%	-2%
47-3013	Helpers, electricians	-52	-9%	-6%	-2%
47-2111	Electricians	-914	-7%	-3%	-0%
47-1011	First-line supervisors/managers of construction trades and extraction workers	117	1%	3%	5%

Source: EMSI Complete Employment - Spring 2009

Occupation Distribution



County	2008 Jobs
Santa Clara, CA (6085)	9,551
Alameda, CA (6001)	7,941
Contra Costa, CA (6013)	5,680
San Francisco, CA (6075)	5,159
San Mateo, CA (6081)	3,824
Marin, CA (6041)	1,801

Source: EMSI Complete Employment - Spring 2009

Data Sources and Calculations

Occupation Data

Organizing regional employment information by occupation provides a workforce-oriented view of the regional economy. EMSI's occupation data are based on EMSI's industry data and regional staffing patterns taken from the Occupational Employment Statistics program (U.S. Bureau of Labor Statistics). Wage information is partially derived from the American Community Survey. The occupation-to-program (SOC-to-CIP) crosswalk is based on one from the U.S. Department of Education, with customizations by EMSI.

State Data Sources

This report uses state data from the following agencies: California Labor Market Information Department.